

Dora Ferretto, Federico  
Mirabelli and Luca Di Lonardo

# Pollution on the beaches



# Situation at the moment– waste carried by sea currents

*Critical situation in several parts of the world, where sea currents carry waste or toxic substances that come from very distant areas.*

*They are: plastics, glass, metallic materials, toxic substances, oil*



# Situation at the moment– pollution from tourism

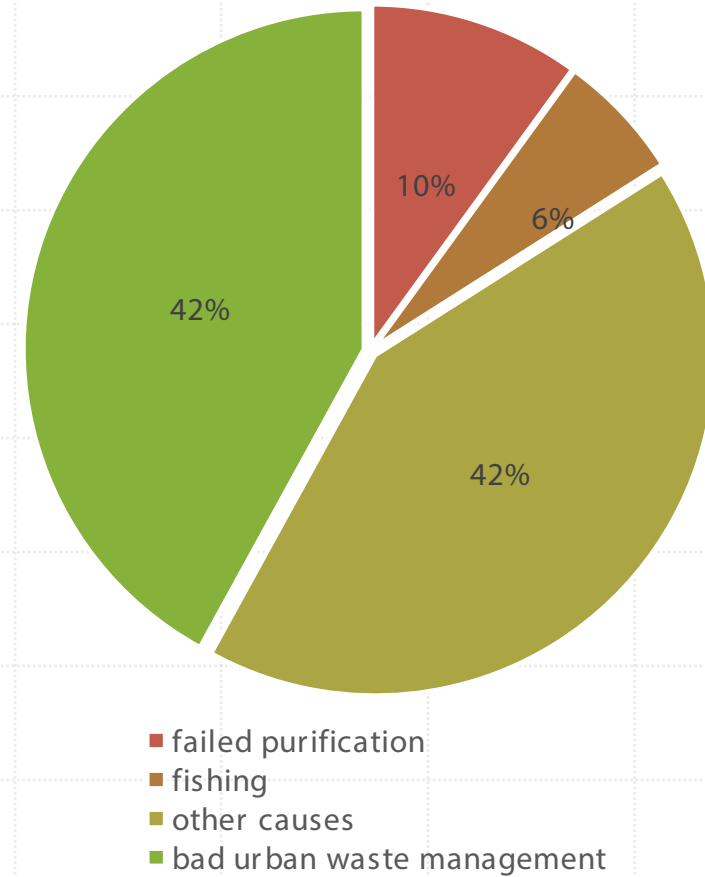
*In the Mediterranean Sea pollution is higher in beaches frequented by lots of people who leave their waste behind, like plastic (bottles, plates, glasses), metal materials and paper/boxes*



# Statistics

Where does the waste come from?

Bad urban waste management is responsible for over 50% of the waste on Italian beaches.



# Possible solutions



## For pollution brought by currents

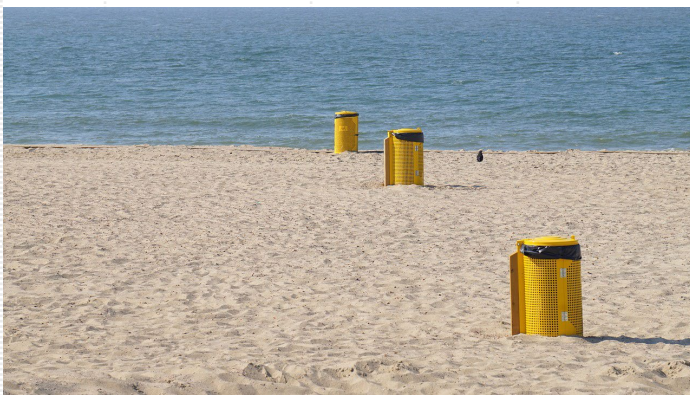
- Prevention: controls and fines for those who don't dispose waste ecologically. Enhance maintenance of water purification systems
- Action: waste collection in the sea near the beaches, possibly employing the fishermen who can no longer fish in the sea due to pollution

## For pollution from tourists

- Prevention: raising awareness in citizens, controls and fines for those who abandon their waste on the beach and encouraging responsible behaviour
- Action: organizing working groups to control the beaches and collect abandoned waste

# Prevention

- States and local administrations can: control and punish any violation of environmental protection regulations
- Environmentalist organisations can: organise awareness-raising campaigns
- Individual citizens can: adopt a conscious behavior to avoid worsening the situation



# OR... Smixeco!

Smixeco is a machine that promotes waste collection.

When the waste is put in the container, it is sorted according to its physical properties, to classify the material, and then it is weighed. Finally, a ticket is issued and printed with a discount you will be able to use in local shops and bars that take part in the Smixeco project.

The waste is sorted in three categories:

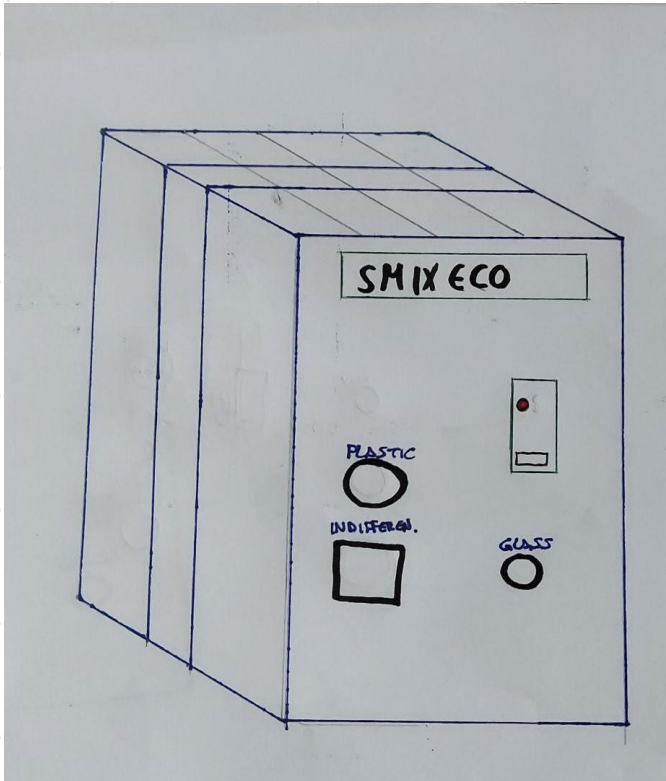
Glass

Plastic

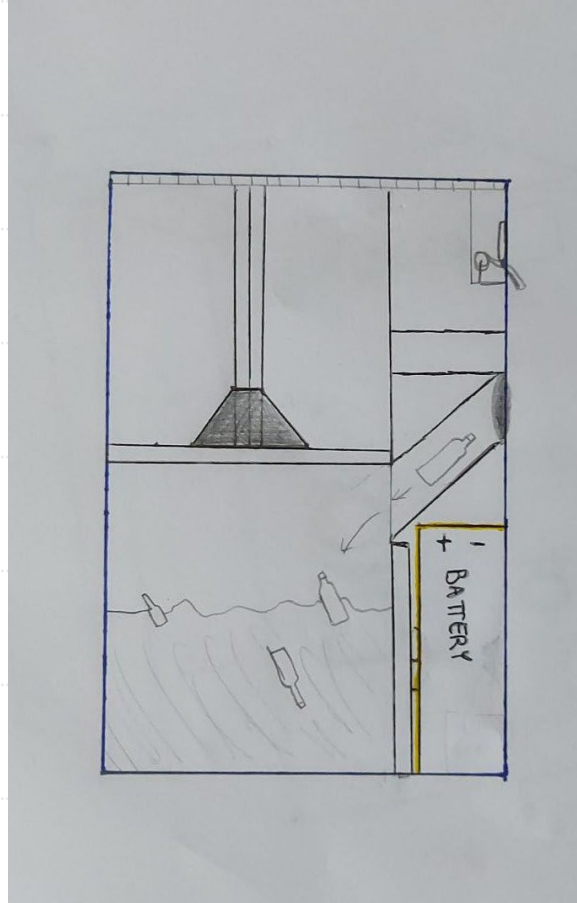
Undifferentiated waste

All the waste disposed in the container is pressed by an internal press.

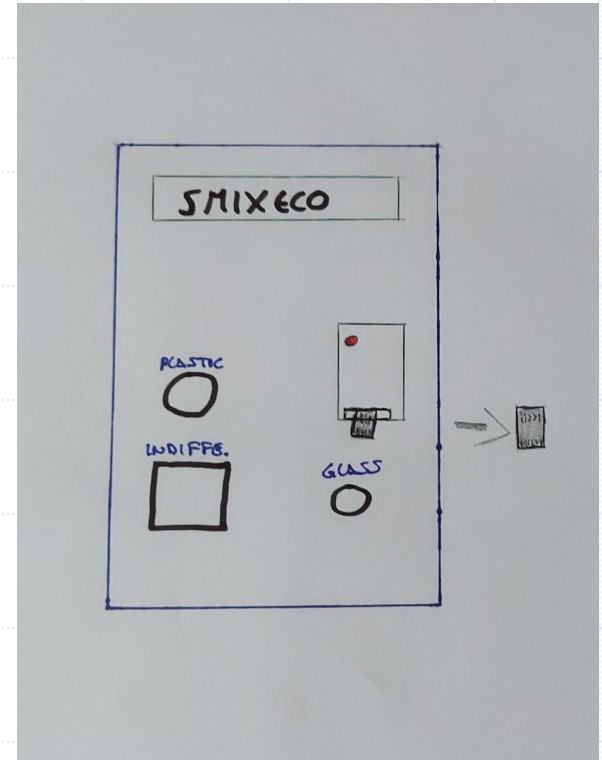
Remember: the higher is the amount of waste you collect, the higher will be your discount!



HOW THE MACHINE LOOKS LIKE



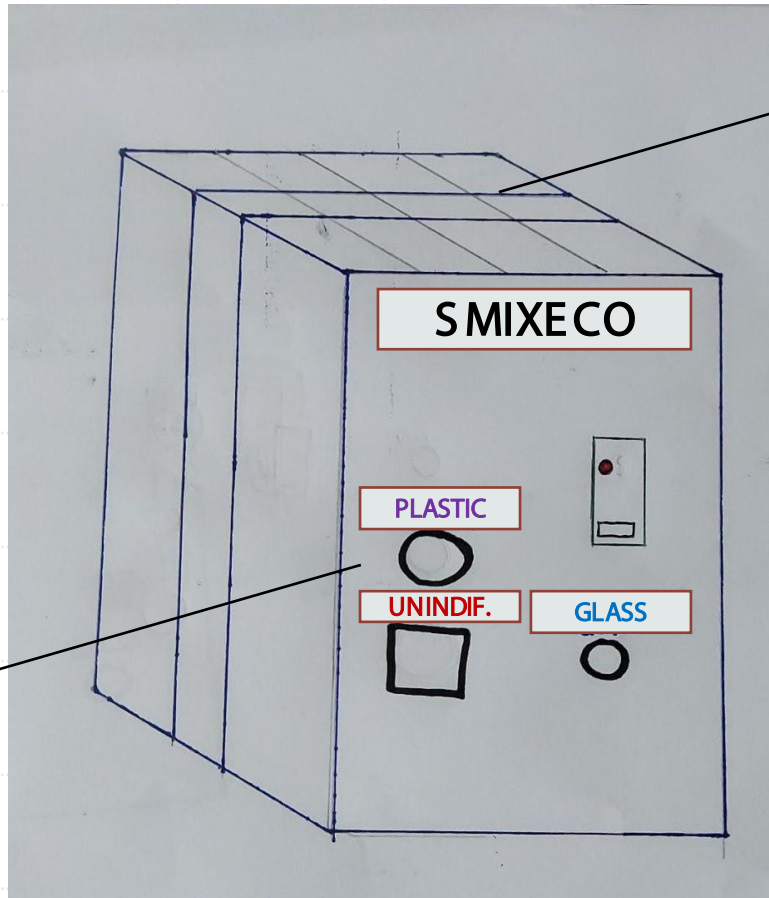
INSIDE THE MACHINE



FRONT VIEW



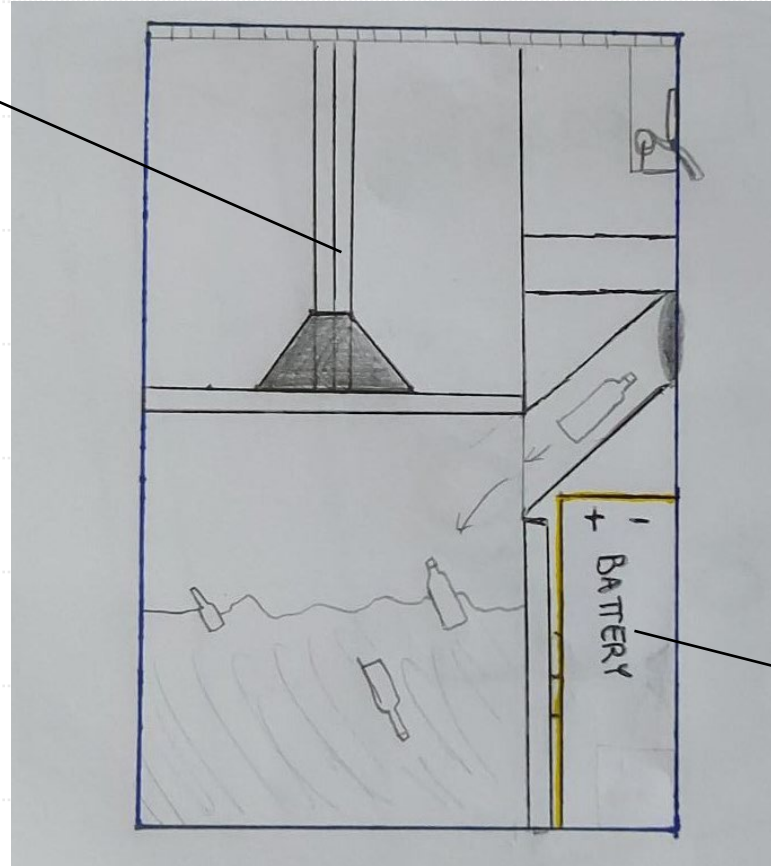
The machine has three different slots. If you put waste in the wrong place, the machine rejects it



On the top of the machine there are solar panels that will capture solar energy during the day. It will be used to charge the battery inside the machine

HOW THE MACHINE LOOKS LIKE

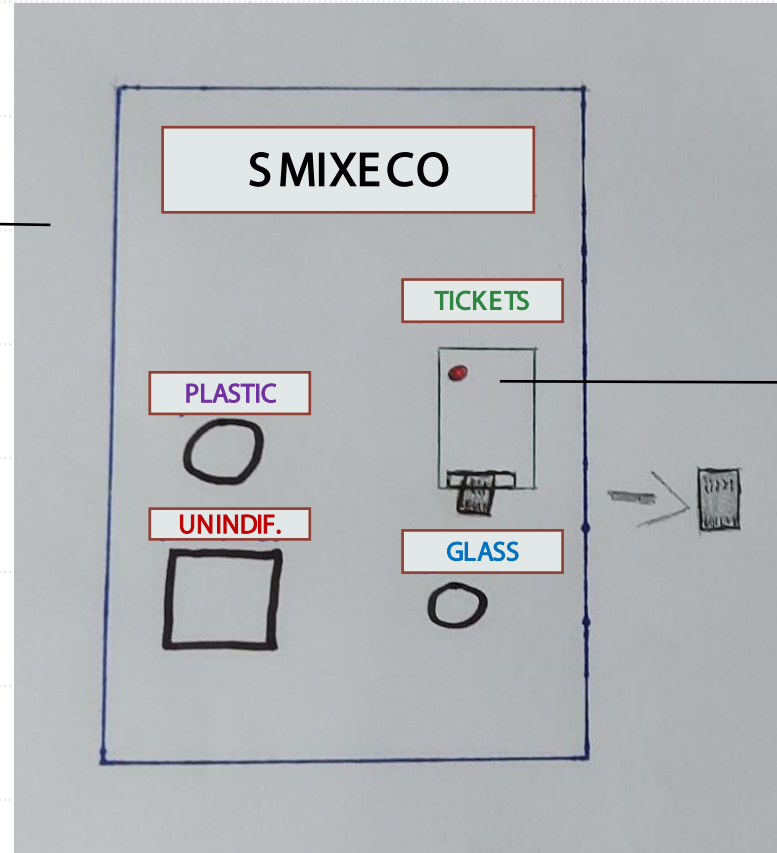
Inside the machine there are three presses that have the task of crushing waste, so that we don't have to empty it all the time



There is also a battery which makes the presses work

INSIDE THE MACHINE

The machine is made of recycled steel



The machine includes a ticket dispenser. A ticket is issued and printed with a discount you will be able to use in local shops and bars that take part in the Smixeco project. The ticket will be printed at the moment, in this way they can't be stolen

FRONT VIEW